

# Cloud Sandboxes for Health Care

## Speed Digital Transformation While Minimizing Risk

### Key Benefits to Health Care

#### Release Digital Services Faster with Less Risk

- Automated deployment of production like environments across legacy/physical infrastructure, virtual, cloud, and IoT
- Integration with DevOps and CI/CD tools
- Shift quality left

#### Ensure HIPPA Compliance

- Maintain configuration management of application blueprints
- Generate detailed audit trails

#### Preserve Patient Privacy

- Support data virtualization in sandboxes
- Duplicate production data while protecting patient data in pre-production environments.

#### Improve Deployment Consistency

- Standardized app/infra blueprints
- Repeatable deployments across dev, test, and production environments

#### Reduce Dev/Test Costs

- Consolidate dev/test labs
- Eliminate costly, duplicated equipment
- Minimize operational dev/test expenses

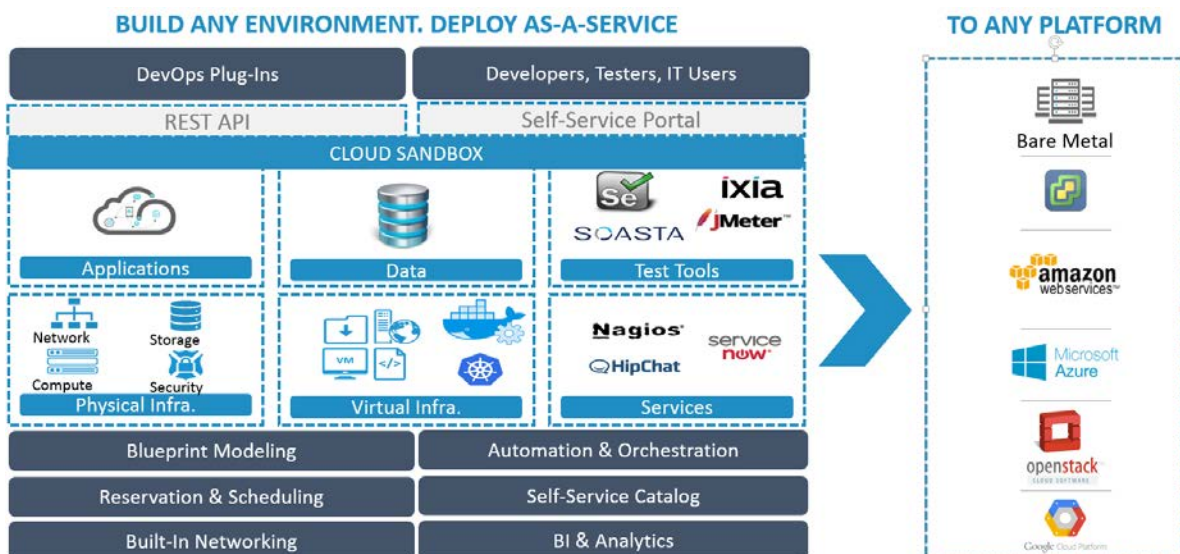
### Health Care's Digital Transformation Challenge

Health care organizations are facing more pressure than ever to rapidly deliver digital services to customers, doctors, and other providers. This requires transforming IT and Dev/Test processes to adopt more automated, agile, and DevOps practices. However, health care is challenged to make this transition because of the need to maintain regulatory compliance, ensure patient privacy, reduce costs, and support an aging but critical IT infrastructure.

### Quali Cloud Sandbox Solution

Quali's CloudShell Cloud Sandboxing software is the cloud automation platform that's built to help enterprises transition from legacy to modern IT infrastructure and applications. CloudShell allows visual modelling of complex blueprints that include physical, virtual, and cloud infrastructure as well as data, applications, test tools, and services. Blueprints are published to a self-service catalog and deployed by developers, testers, or DevOps tools into dev, test, and production environments. CloudShell's powerful Python and Ansible based automation handles provisioning of all environment resources, including configuring equipment, loading firmware, deploying VMs, configuring apps and services, automating network connectivity, as well as snapshotting and restoring environments. An integrated analytics and BI tool provides rich insights and reporting.

***With CloudShell, health care organizations can release new digital services faster, while maintaining compliance and ensuring patient privacy.***



# Cloud Sandboxes for Health Care

## Key Features and Capabilities

### Full-Stack and Legacy Support

Blueprints can contain all components critical to your evolving application: legacy components, physical infrastructure, virtual infrastructure, applications, your Application under Test (AUT), virtual services, databases, virtual & physical network components, and public cloud infrastructure.

### Visual Interface for Designing Blueprints

Easily create application blueprints simply by using the visual interface to drag and drop infrastructure, apps, test components, and networks.

### Web-Based Self-Service Blueprint Catalog

Publish application and infrastructure blueprints to a web-based catalog that's accessible any time, any-where. Provide one click, on-demand deployment of blueprints by multiple users, groups, or teams.

### APIs for CI/CD and Release Pipeline Integration

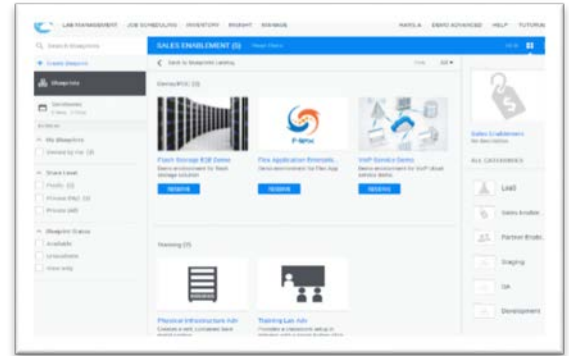
CloudShell comes with a REST API as well as Python and XML API libraries for easy incorporation into your existing DevOps tools and CI/CD pipeline.

### Capture Sandbox State

Deployed blueprints maintain context during the time that they are running. This means that it is possible to save and restore the infrastructure and application configuration at any point in time. Integrate test results with environment data to provide a complete context around test runs for diagnosing failures as well as for auditing purposes.

### Powerful Analytics and Reporting for DevOps Teams

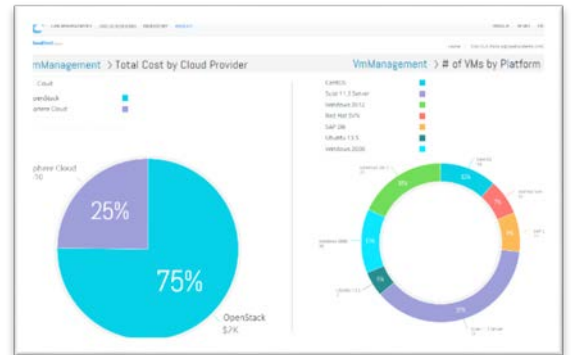
CloudShell provides a complete Business Intelligence and analytics tool that provides rich insight into blueprint usage, how resources are being consumed, and specifics on configuration data. Customizable, web based dashboards make it easy to share reports and create actionable insights.



Publish blueprints to web based self-service



Model and deploy complex application blueprints



Powerful reporting and analytics

## Customer Snapshot

A major California health care provider uses Quali's cloud sandboxing software to adopt DevOps practices - increasing speed, efficiency, and ensuring regulatory compliance.

*"Quali has significantly cut down our testing times by allowing us to create and modify complex sandbox environments with just a few simple clicks."*

– Network Administrator, Major CA Health Provider