

Transform Your Lab into a Cloud with Quali Cloud Sandboxes

KEY BENEFITS

Optimize Lab Efficiency with advanced resource sharing, conflict management, policy based provisioning, and scheduling.

Consolidate Labs and Reduce Duplicate Infrastructure with 24/7 global access for local and remote users and full stack automation and full connectivity control.

Eliminate Hoarding by ensuring users can save and restore even the most complex resource configurations at any time.

Reduce Cycle Times with powerful automation that eliminates the need for time consuming racking, stacking, patching, and provisioning resources.

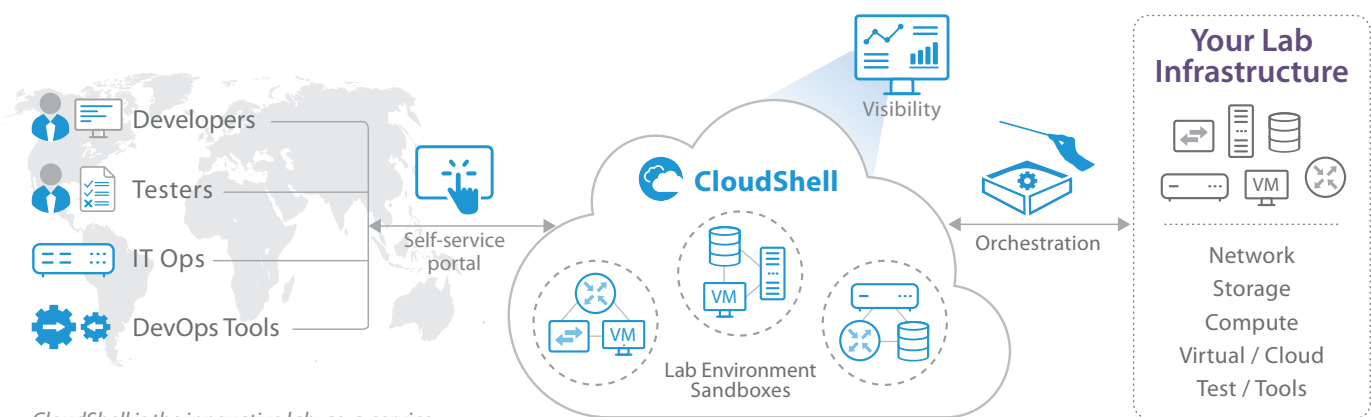
Maximize Cost Savings by ensuring that lab resources are fully utilized, costly equipment can be shared, and minimal time is spent configuring lab resources.

The Lab Challenge

Enterprises, Service Providers, and Technology Manufacturers are increasingly pressured to achieve greater agility and deliver products and services faster. At the same time, these organizations have massive labs such as Dev/Test, R&D, QA, Centers of Excellence, security compliance, and Executive Briefing centers that are extremely critical to their business. Typically built on traditional and largely manual based processes, these labs can only go so far in helping businesses achieve significant levels of agility. Businesses need to make these labs a strategic part of their agility initiatives. Since they're too solution specific to be moved to the cloud, businesses need a way to bring cloud agility to their labs.

Quali's Lab-as-a-Service Solution

Quali's CloudShell Cloud Sandboxing software is the innovative LaaS solution that brings the core benefits of the cloud – self-service, multi-tenancy, automation, and scalability – to your on-prem labs and pre-production data centers. CloudShell turns your labs into self-service private clouds. Allow your end users to rapidly model and publish standardized blueprints for configuring lab infrastructure: physical equipment, connectivity, and virtual resources. Publish those blueprints to a web-based catalog for easy, one-click, on-demand deployment as live lab sandboxes. CloudShell's intelligent automation and orchestration handles all the provisioning, including configuring equipment, loading firmware, deploying VMs, configuring tools, and automating network connectivity. Scale to 1000s of users while ensuring granular access control, resource conflict resolution, resource sharing, and automated environment save & restore.



CloudShell is the innovative lab-as-a-service platform that turns your labs into self-service clouds.

Key Features

Visual Based Environment Modelling

- Easily model complex lab infrastructure environments with drag and drop resources from lab inventory
- Model full stack environments including physical, virtual, cloud resources as well as network connectivity

Web-Based Self-Service Blueprint Catalog

- Publish lab environments as blueprints to web-based catalog that's accessible any time, any where
- One click, on-demand deployment of blueprints by multiple users, groups, or teams

Intelligent Automation and Provisioning

- Automatic provisioning of lab environments includes configuring equipment, loading firmware, provisioning networks, setting up test and other tools, and spinning up virtual machines
- Full Layer 1 Connectivity automation allows zero-touch dynamic re-provisioning of lab equipment connectivity.
- Automated save and restore eliminates the need to hoard equipment and lab resources
- Visual based automation authoring makes developing integrations and sophisticated orchestration flows fast and easy

Remote Lab Access and Consolidation

- Allow multiple users and groups to access lab resources anytime, anywhere
- Consolidate multiple labs into a single super lab
- Optimize access to lab resources across geos

Multi-Tenancy and Resource Optimization

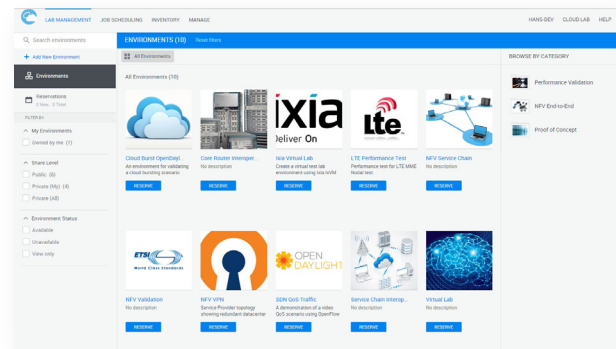
- Policy based automation eliminates reliance on specific devices; instead, abstract lab environments ensures optimal selection of lab resources.
- Shared access to physical infrastructure maximizes utilization of lab resources
- Intelligent resource conflict resolution and scheduling ensures optimal use of lab equipment

Power Control

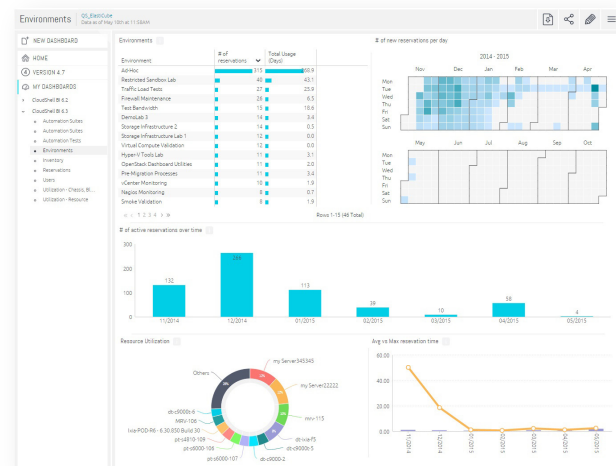
- Support for major PDU vendors allows powering on equipment only when it's being actively used
- Allows true "Dark Lab" and effective green initiatives

Reporting and Analytics

- Web based, sharable analytics dashboards provide immediate insight into lab resource usage
- Track who and how resources are being used and what equipment is over/under utilized
- Get better insight into resource planning and scale out



Web based self-service portal



Powerful reporting and analytics

Customer Snapshot World Wide Technologies



WWT uses Quali's cloud sandbox software to turn their Advanced Technology Center into a self-service cloud.

"CloudShell has enabled WWT's cutting edge Advanced Technology Center (ATC) to deliver complex infrastructure environments from a service catalog that addresses a broad array of hardware and virtual technologies. The result is that the ATC has transformed our business operations from being highly logistics-driven to being highly cloud-driven and we're seeing a great payout from that transformation." - **Practice Director, Enterprise Solutions, WWT**