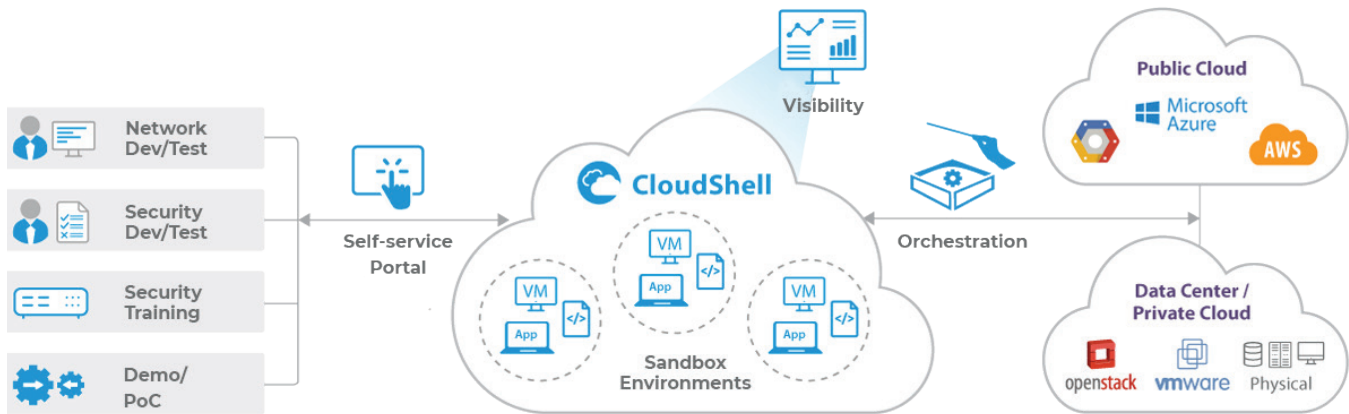


CLOUDEHELL PRO:

CloudShell Pro accelerates and simplifies environment provisioning by enabling teams to create self-service, on-demand replicas of full-stack infrastructure environments for hybrid cloud configurations in just one click.



BENEFITS

Deliver Environments On-Demand
Provide your teams with on-demand, self-service access to the standardized environments they need.

Increase Efficiency
Increase resource efficiency for physical and virtual assets through lab consolidation and automated tear-downs of unused resources.

Gain Full Visibility
Increase visibility and control with single pane of glass.

ENVIRONMENT AS A SERVICE ACROSS YOUR ORGANIZATION

Create replicas of complex infrastructure and application configurations for development, testing, sales demos, training, and support with just one click.



Slash your Dev/Test and lab infrastructure cost by **61%**



Accelerate your enterprise sales cycles by **22%**

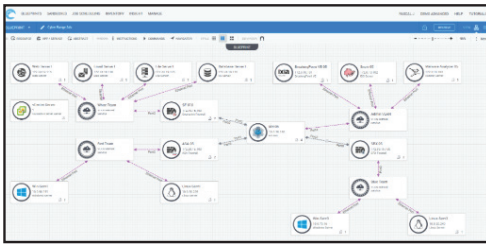


Spin up training and test environments in under **1 minute**

"The ability to spin-up sandboxes for Hybrid cloud deployments with standardized environments and end-to-end visibility can allow development and test teams to make the best use of on premise and public cloud resources, simplify workflows and rollout releases faster with higher quality"

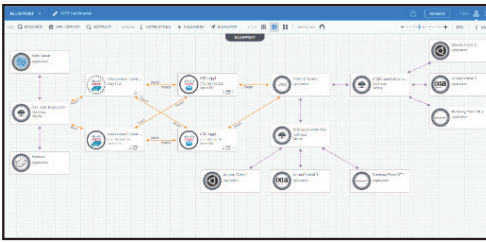
- DevOps and IT Architect, Cisco

FEATURES



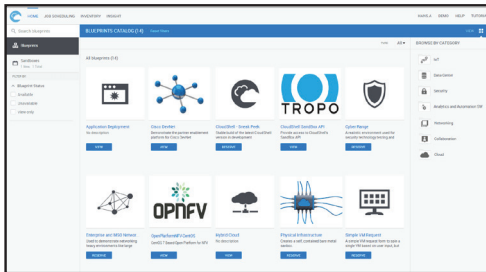
MODEL INFRASTRUCTURE AND APPLICATIONS

Model complex infrastructure and application environments. Users drag and drop modules to combine physical and virtual infrastructure, network connectivity, applications, and cloud interfaces.



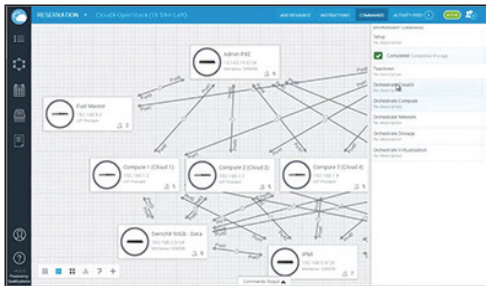
ORCHESTRATION WORKFLOWS

Use out of the box automated set-up and tear-down capabilities as well as extensible Python libraries to create powerful orchestration workflows inside of sandbox environments. Save and restore environment resources with ease.



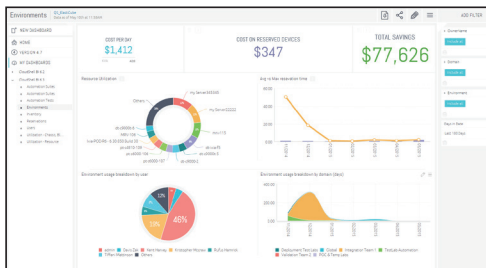
SELF-SERVICE DEPLOYMENT

One click deployment into sandbox environments. Publish environment blueprints to a shared self-service catalog for on-demand access by all your teams wherever they are.



SMART MULTI-TENANCY

Create isolated environments while sharing infrastructure and networks without conflict. Infrastructure can be locked or shared with role-based access control (RBAC) for optimal use of resources.



LAB AUTOMATION AS A SERVICE (LAAS)

Use built-in lab automation and management features like inventory, reservations, scheduling, role-based access control, conflict resolution, and business intelligence. Easily automate multiple labs and share them among hundreds or thousands of engineers.

